

# Canon T60

The camera that lets everyone  
explore the spirit of fine photography

## Canon

CANON INC. 7-3, Honcho-Shinjuku 2-Chome, Shinjuku-ku, Tokyo 163, Japan  
Mailing address: P.O. Box 5055, Dai-ichi Seimei Building, Tokyo 163, Japan

U.S.A. — CANON U.S.A., INC. HEADQUARTERS  
One Canon Plaza, Lake Success, N.Y. 11042, U.S.A.  
CANON U.S.A., INC. ATLANTA OFFICE  
8075 Delaware Parkway, Norcross, Ga. 30063, U.S.A.  
CANON U.S.A., INC. CHICAGO OFFICE  
100 Park Blvd., Itasca, IL 60143-2001, U.S.A.  
CANON U.S.A., INC. LOS ANGELES OFFICE  
123 Pacific Avenue East, Costa Mesa, Cal. 92626, U.S.A.  
CANON U.S.A., INC. SANTA CLARA BRANCH  
4800 Ruffalo Drive, Santa Clara, Cal. 95054, U.S.A.  
CANON U.S.A., INC. DALLAS OFFICE  
3005, Regent Blvd., Irving, Tex. 75039-3140, U.S.A.  
CANON U.S.A., INC. HONOLULU BRANCH  
1525 Alaui St., Reg. #8, Honolulu, Hawaii 96814, U.S.A.  
CANON U.S.A., INC. WASHINGTON D.C. BRANCH  
2707 General Washington Drive Alexandria, Va. 22304, U.S.A.

CANADA — CANON CANADA INC. HEADQUARTERS  
6390 Dene Road, Mississauga, Ontario L4T 1P1, Canada  
CANON CANADA INC. MONTREAL SERVICE CENTRE  
13602 Côte de Liesse, Lachine, Québec H8T 1A3, Canada  
CANON CANADA INC. CALGARY OFFICE  
7676, 15th Street, N.E. Calgary, Alberta T2C 1Y0, Canada

EUROPE, AFRICA  
& MIDDLE EAST — CANON EUROPE N.V.  
Ronde van de Zwaluwen 5641, P.O. Box 2202, 1180 EG Amstelveen, The Netherlands  
CANON PHOTO VIDEO FRANCE S.A.  
11, rue de l'Éclaircie, Avenue du Général de Gaulle, Courbevoie Cedex, France  
CANON UK LTD.  
Units 4 & 5, Beech Trading Centre, North Circular Road, London NW10 3JF, United Kingdom  
CANON EURO PHOTO G.m.b.H.  
Gartenstrasse 30/32, D-4150 Krefeld 1, West Germany

CENTRAL &  
SOUTH AMERICA — CANON LATIN AMERICA, INC. DEPTO. DE VENTAS  
Avenida 1022, Panamá 3, República de Panamá  
CANON LATIN AMERICA, INC. CENTRO DE SERVICIO Y REPARACION  
Aparicio 2018, Zona Libre de Colon, Republica de Panamá

SOUTHWEST ASIA — CANON HONG KONG TRADING CO., LTD.  
Rooms 1111-3 & 1121-2, Peninsula Centre, 67 Mody Road, Tsimshatsui Ferry, Kowloon, Hong Kong  
CANON SINGAPORE PTE. LTD.  
35 South Bridge Road # 4, 1101715, South Bridge Centre, Singapore 0735

OSAKA — CANON AUSTRALIA PTY. LTD.  
1 Thomas Holt Drive, North Ryde, N.S.W. 2113, Australia

CANON OPTICS NEW ZEALAND LTD.  
First Thomas Drive, P.O. Box 25326, Telephone, Auckland, New Zealand

JAPAN — CANON SALES CO., INC.  
11-28, Mid. 3-Chome, Minato-ku, Tokyo 108, Japan

PUB.C-CE-349 ©CANON INC. 1990 PRINTED IN JAPAN  
0490S35



- Compact & lightweight
- Aperture-priority AE plus manual
- Uses Canon FD lenses

# Discovering great photography is now easy

Sometimes simple tools are best. They just feel better. And they put you directly in touch with what you are doing.

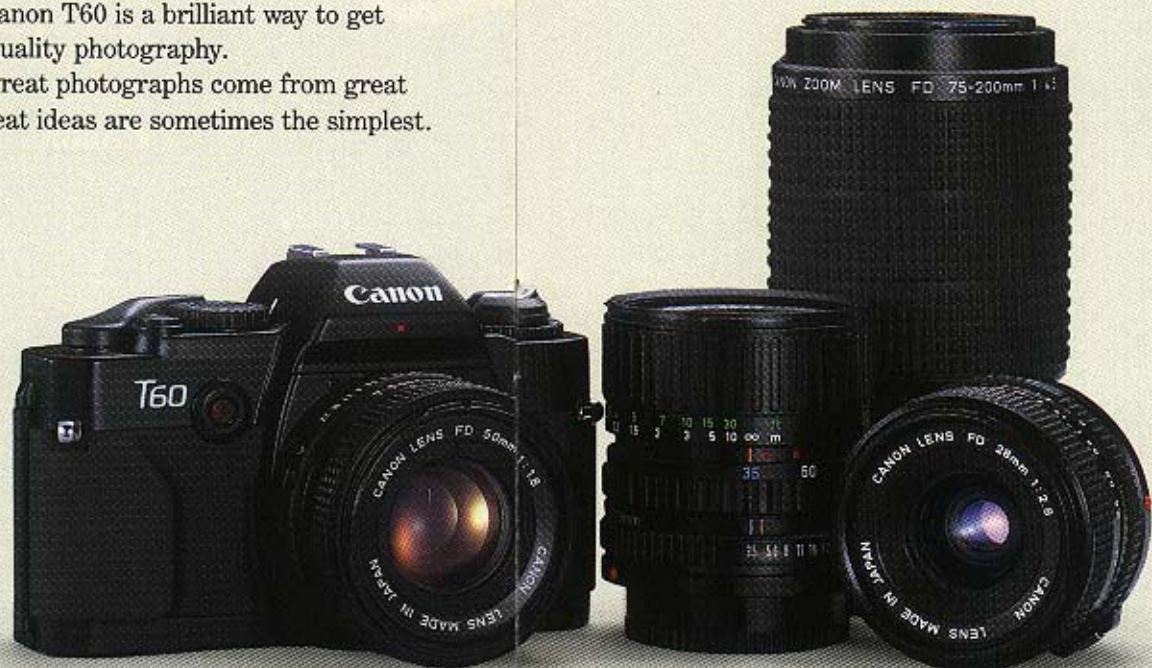
That's the philosophy behind Canon's new T60. It's a high-quality manual single-lens reflex camera with an aperture-priority AE program to help you with metering the light. The new T60 is so remarkably compact and lightweight, that you'll feel comfortable taking it wherever you go.

What's more, this new T60 features the standard Canon FD lens mount. That means you can use the entire selections of superior Canon FD lenses, from super wide-angle fisheyes to powerful telephotos that make far away places seem right next door.

And just to give you an idea of how much you are going to enjoy the Canon family of optics, we've packaged a couple of our most popular lenses with the T60 body so we can make a whole system available at a special price.

The new Canon T60 is a brilliant way to get started with quality photography.

After all, great photographs come from great ideas. And great ideas are sometimes the simplest.



# Fundamental operation makes learning photography fun

The T60 is a basic, manual camera. That means fundamental operations — focusing, film loading, film winding, and so forth — are done easily. A built-in center-weighted average light metering system helps you decide on the correct exposure. And since it's a through-the-lens system, the light meter measures exactly what you'll be shooting, so there's little chance for error. The T60 is the perfect camera for the beginning photographer, whether a student studying photography or someone picking up an SLR for the first time. Basic picture-taking operations such as aperture values, shutter speeds, metering, and focus can all be explored.



**75-200 mm** A telephoto zoom lens lets you bring the world up close. It's the first choice for outdoor or nature photography, and they also let you get right in with the action when shooting sports.

## **A choice of two exposure control modes**

The new Canon T60 lets you decide how you want to use it. You can go with fully manual operation. Or you can rely on the aperture-priority AE program. Use manual when you want to select a specific shutter speed, or use the AE system for no-worry reliability.

### **Aperture-priority AE mode**

Automatic operation is a Canon speciality. And the new T60 is no exception. There's an AE (Auto Exposure) program built in so you can just shoot confidently.

In the aperture-priority AE mode, you decide the appropriate aperture, and the shutter speed is set automatically by the camera. Fully electronically controlled speeds range from 8 seconds to 1/1000 seconds.

### **Viewfinder & information display**

Since the T60 is a through-the-lens SLR, you see exactly what you're taking. Focusing is easy, thanks to the split microprism focusing screen.

The information display has a system of LED exposure



level indicators. When you're shooting in aperture-priority AE mode, exposure is determined automatically. In manual mode, correct exposure is determined by manually adjusting the shutter speed or aperture to match the exposure level indicated by the LED. It's a simple, quick operation.

### **Self Timer**

It's easy to put yourself in the picture by using the handy self-timer. There's a 10 second delay with a blinking LED to let you know it's working.

# Fully manual operation



Serious photographers and beginning photography students alike often want to go it alone, doing things the way they like. In the manual mode, you decide the shutter speed and aperture setting yourself. You can match the shutter speed to the speed of the action. Or control depth of field by selecting the appropriate aperture. It's the best way to learn the fundamentals of photography. And the built-in light meter helps make sure your exposures are correct.

The shutter speed dial is on top of the camera body. Shutter speeds range from 1 second to a very fast 1/1000 second. There's also a bulb setting for making very long time-lapse exposures. The aperture rings are mounted on the lenses, and aperture values vary slightly according to the lens being used.



**35-70 mm**  
This popular lens is the one to take with you for general shooting expeditions. If you're planning on travelling light, this is the one lens you should carry.

# gives you control

## Shutter speeds & aperture values

Learning about photography means understanding the relationship between shutter speeds and aperture values. It's actually quite simple. You need a fast shutter speed if your subject is moving quickly. For non-moving subjects, shooting at about 1/60 second is fine. On the other hand, you need a smaller aperture for greater depth of field. Depth of field just means how much of the photograph — from background to foreground — is sharply in focus. At f/22, for example, just about everything should be clear. At f/3.5, only the subject on which you have focused will be sharp. Balancing shutter speed against aperture value is the key. For the same amount of light, the faster the shutter speed you choose, the larger your aperture must be. Once you get used to thinking this way, you'll be involved in doing *real* photography.



**28 mm** This versatile lens is a great choice for a variety of shooting situations. Outdoors a wide-angle lens lets you obtain a deep depth of field for landscapes.

## Metered manual operation

The Canon T60 makes sure you always know what you're doing. There's an information display inside the viewfinder that helps you select the correct aperture/shutter combination. You just match LEDs and you're ready to shoot. There's even a special overexposure warning, too.

# Canon FD lenses provide great results

One of the pleasures of good photography is learning how to use different lenses. Certain situations are best handled with telephoto lenses; others might require a wide-angle lens. Within those groups are further refinements. And each photographer has his or her favorite lenses that just "feel right." With the Canon T60, you can experiment to your heart's content, thanks to the complete range of top-quality Canon FD lenses that fit the T60's standard FD mount.

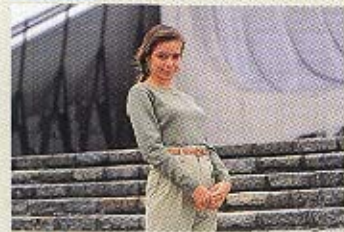
By learning to use specially recommended Canon lenses, you'll have the full system you need to explore the beauties of your world.

## The complete Canon FD lens system

Canon FD lenses have proven to be unmatched for those serious about quality photography. They offer superior optical designs and are particularly admired for their excellent sharpness and true color quality. The ability to use the entire range of superior Canon FD lenses is one of the new T60's most important features.



28mm Lens



85mm Lens



200mm Lens

### Zoom

FD 20-35mm f/3.5L  
FD 35-70mm f/3.5-4.5  
FD 75-200mm f/4.5  
FD 80-200mm f/4L

### Fish-eye

Fish-eye FD 15mm f/2.8

### Super Wide-Angle

FD 14mm f/2.8L  
FD 17mm f/4  
FD 20mm f/2.8

### Wide-Angle

FD 24mm f/1.4L  
FD 24mm f/2  
FD 28mm f/2  
FD 28mm f/2.8  
FD 35mm f/2

### Standard

FD 50mm f/1.2L  
FD 50mm f/1.4  
FD 50mm f/1.8

### Telephoto

FD 85mm f/1.2L  
FD 100mm f/2  
FD 135mm f/2  
FD 200mm f/1.8L  
FD 200mm f/2.8  
FD 300mm f/2.8L  
FD 300mm f/4L

### Super Telephoto

FD 400mm f/2.8L  
FD 500mm f/4.5L  
FD 800mm f/5.6L

### Macro

Macro FD 50mm f/3.5  
Macro FD 100mm f/4



## Specifications

**Type:** 35 mm focal plane shutter SLR camera

**Usable Lenses:** Canon FD lenses

**Viewfinder:** Eye-level pentaprism single-lens reflex type. Gives 93% vertical and horizontal coverage of actual picture area.

**Magnification:**  $\times 0.86$  with 50 mm lens at infinity

**Focusing Screen:** Fixed, provided with split-image/microprism rangefinder

**Viewfinder Information:** Provided by 16 LEDs which light or blink. 1.

Shooting mode: AUTO, M, 60 $\frac{1}{2}$ , B. 2. Shutter speed: 1/1000 – 1 sec, LT (12 steps). 3. Overexposure warning: OVER

**Light Metering:** TTL full-aperture, center-weighted average metering using silicone photocell.

**Exposure Control:** 1. AUTO: Aperture-priority AE 2. Manual

**Metering Range:** EV 2 – 18 with 50 mm f/1.8 at ISO 100

**Out-of-Coupling Range Warning:** "OVER" lights in high brightness settings

**Shutter:** Vertical-travel metal focal plane shutter with all speeds electronically controlled

**Shutter Speed Range:** 1/1000 sec. to 8 sec. in aperture-priority AE; 1/1000 sec. to 1 sec. and bulb in manual.

**Flash Sync. Speed:** 1/60 sec.

**Self-timer:** Provided with 10-sec. delay

**Film Speed:** ISO 25 – 1600

**Flash Contacts:** X-sync, contact on accessory shoe

**Power Source:** Two LR 44 alkaline batteries or two SR44 silver batteries. Battery life about one year under normal use.

**Battery Check:** Viewfinder LEDs light when shutter button pressed halfway

**Dimensions:** 5-3/8" (W)  $\times$  3-3/8" (H)  $\times$  1-13/16" (D)  
(136  $\times$  86  $\times$  46.5 mm)

**Weight:** 12.8 oz (365 g) body only with batteries

All data are based on Canon's Standard Test Method. Subject to change without notice.