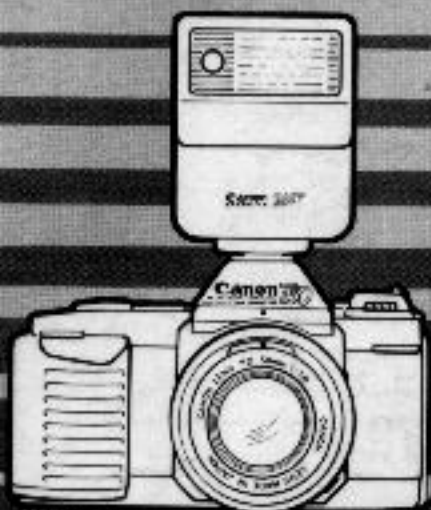


# Canon Speedlite 244T



スピードライト 244T

使用説明書

Speedlite 244T

Instructions

Speedlite 244T

Notice d'emploi

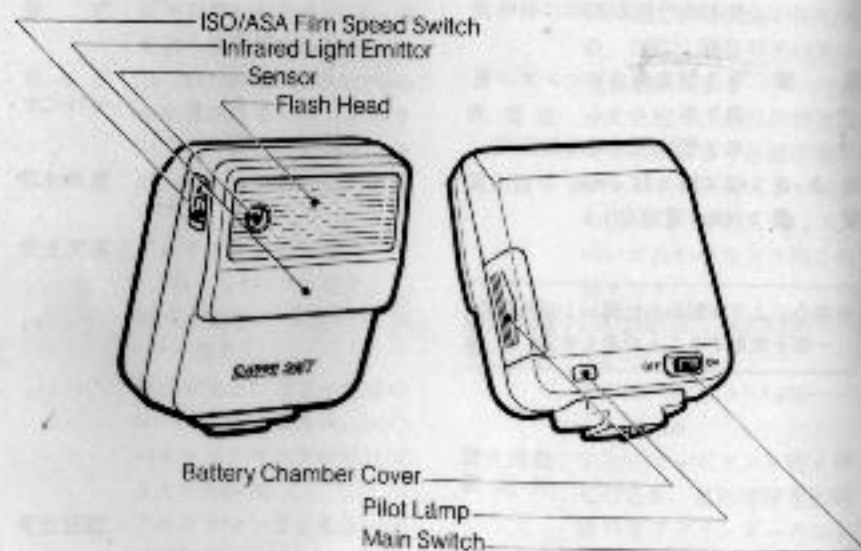
Speedlite 244T

Bedienungsanleitung

Speedlite 244T

Instrucciones

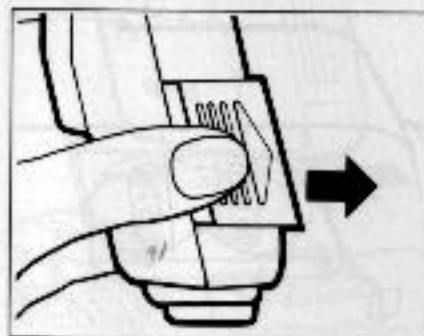
## Nomenclature



The Canon Speedlite 244T is an automatic,\* electronic flash unit designed exclusively for the Canon T50. The 244T sets both the shutter speed and aperture automatically, making flash photography incredibly simple. When the "P" in the T50's viewfinder starts to blink, all you have to do is attach the unit to the camera and turn the main switch on for beautiful flash pictures.

\* An automatic exposure flash has a sensor which measures the light reflected back from the subject and cuts off flash emission automatically when the subject has received the proper amount of light.

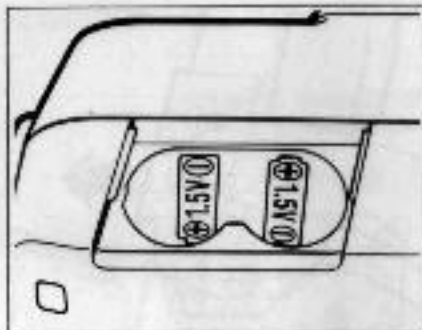
Use this flash when the green "P" starts to blink.



## Loading the Batteries

Use two new size AA alkaline-manganese (LR6/AM-3) or Ni-Cd batteries. Carbon-zinc batteries may also be used, but their life is shorter. In temperatures below 0°C (32°F), use fully charged Ni-Cd batteries for best results.

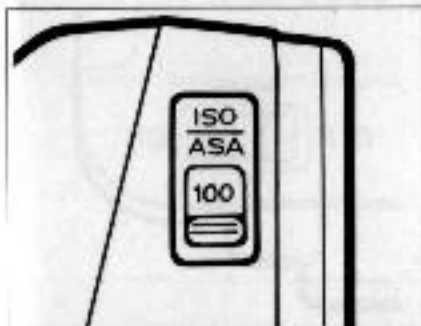
1. Slide the battery chamber cover off.



2. Load the batteries so that their contacts are in the directions indicated by the diagram inside the battery chamber.
3. Once the batteries are loaded, slide the battery chamber cover back on while pressing the batteries down. Make sure the cover's tab fits into the corresponding groove on the flash body.

Remove the batteries if you do not expect to use the 244T for about three weeks or longer.

When using Ni-Cd batteries, please note that each brand has its own terminal system. Be sure to use the type which is suitable for this flash. Recharge Ni-Cd batteries according to the manufacturer's instructions.

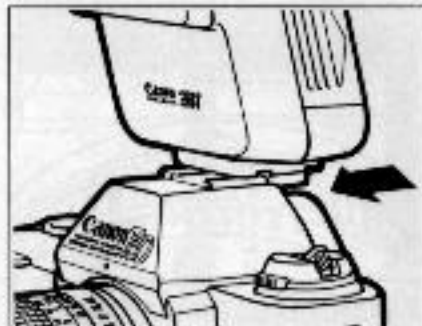


### Setting the ISO Film Speed

Set the ISO film speed corresponding to the film in use.

Use only ISO 100 or 400 film with this flash. Other films cannot be used.

\* The number after ISO is the equivalent ASA number.



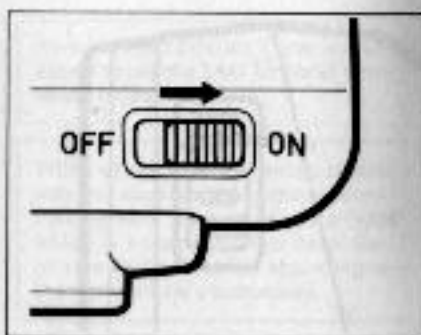
### Mounting the 244T on the Camera

Insert the Speedlite into the camera's accessory shoe. For proper electrical contact, make sure it is pushed in all the way.

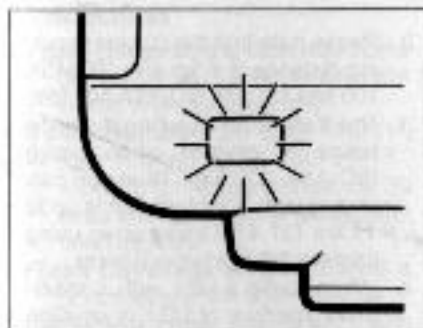


### Taking Flash Pictures

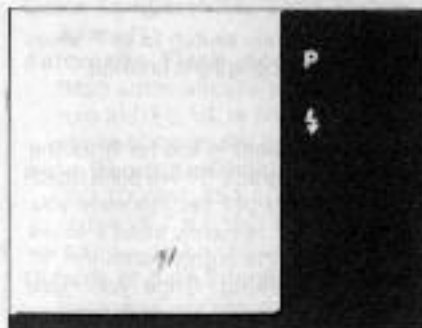
1. Make sure that the lens is set to the "A" mark, and that the camera is set to "PROGRAM."



2. Turn the main switch of the flash ON.



3. Make sure the pilot lamp lights up. When the "P" mark lights up, the shutter speed switches to X-sync (1/60 sec) automatically.
4. Compose the picture and focus the subject.



5. Press the shutter button halfway to activate the viewfinder information display. When the "P" mark and the "S" mark light up, you can take a picture.
  - When the shutter button is pressed halfway, the Speedlite emits near infrared rays and an aperture is automatically selected according to the shooting distance and reflectivity of the subject.

E shooting distance and reflectivity of the subject.

6. Set the main switch to OFF when flash photography is finished.

#### Notes

1. If the subject is too far from the flash, the T50's and T80's green "P" or the T70 lens' full aperture value will blink rapidly (8 times per sec) to warn you. (The "f" remains solid.) With the T90, the shutter speed and the aperture value blink. Move closer to the subject until the "P" or the aperture value, etc, stop blinking. Once you have found a suitable shooting position, be sure to remove your finger from the shutter button\* and re-focus the subject. Then you can take the picture.

\* If you do not remove your finger from the shutter button after changing your position,

exposure will be incorrect, since exposure is set each time the shutter button is pressed halfway.

2. Please note that the closest shooting distance is 0.5m with ISO 100 and 1m with ISO 400 film.
3. The flash auto shooting distance range is greater when using ISO 400 film. Thus you can photograph a subject that is up to 11.4m (37.4 ft.) away when using brighter (f/2.8 or larger) lenses.
4. When using a lens with a maximum aperture of f/3.5 or smaller, keep in mind that the flash auto shooting distance range will be less than when using brighter (f/2.8 or larger) lenses.
5. Rapid continuous shooting with the T-series cameras is not possible when the 244T is mounted.

#### Specifications

**Type:** Energy-saving flash with series control circuit. 3-aperture selection switch is set automatically.

**Guide Number:** 16 (ISO 100·m) or 26 (ISO 25·ft.) At full charge, i.e. 30 secs after pilot lamp glows, with new batteries.

**Flash Coverage Angle:** Covers a 35mm lens on the 35mm format.

**Recycling Time:** 0.5—9 secs with new alkaline-manganese batteries; 0.5—6 secs with fully-charged Ni-Cd batteries.

**Number of Flashes:** Max. flash output, 30 sec firing intervals: 150 flashes with new alkaline-manganese batteries, 70 flashes with fully-charged Ni-Cd batteries. Min. flash output, 10 sec firing intervals: 1,300 flashes with new alkaline-manganese batteries, 600 flashes with fully-charged Ni-Cd batteries.

**Color Temperature:** Same as daylight.

**Automatic Flash Aperture:** The flash automatically sets the aperture to 1/2.8, f/4, or f/5.6 at the first stroke of the shutter button.

**Auto Shooting Distance Range:** ISO 100: 0.5—5.7m (1.6—18.7 ft.); ISO 400: 1—11.4m (3.3—37.4 ft.).

**Outside of Auto Shooting Distance Range:** If subject is too far, T50's and T80's "P" mark or the T70 lens' full aperture value blinks rapidly at first stroke of shutter button.

**Film Speed Setting:** ISO film speed indication, ASA 100 and 400. (No ISO indication on unit.)

**Power Source:** Two penlight (AA) alkaline-manganese (LR6, AM-3) or Ni-Cd batteries.

**Dimensions:** 63 (W) × 86 (H) × 41.5 (L) mm (2-1/2" × 3-3/8" × 1-5/8")

**Weight:** 140 g (4-15/16 oz.) without batteries.

Subject to change without notice.

E